

# Missa Laudate Dominum - Kyrie I à8

Giovanni Pierluigi da Palestrina  
(1525 - 1594)

Score for Missa Laudate Dominum - Kyrie I à8 by Giovanni Pierluigi da Palestrina. The score is for eight voices (Canto I, Alto I, Tenor I, Basso I, Canto II, Alto II, Tenor II, Basso II) and includes Latin lyrics.

Lyrics:

Ky - ri - e - lei - son, e -  
Ky - ri - e - le - i - son,  
Ky - ri - e - lei -  
Ky - ri - e -  
le - i - son, Ky - ri - e e -  
Ky - ri - e - le -  
son, e -  
lei - son, Ky - ri - e -  
Ky -  
Ky - ri - e - le -  
Ky - ri - e - le -  
Ky - ri - e - le -

le - i - son, Ky - ri - e - lei -

i - son, Ky - ri - e - lei -

lei - son, Ky - ri - e - e -

le - i - son, Ky - ri - e - lei -

ri - e - lei - i - son, Ky - ri - e - lei - son,

i - son, Ky - ri - e - e - lei - son,

i - son, Ky - ri - e - e - lei - son,

i - son, Ky - ri - e - e - lei - son,

son, Ky - ri - e - lei - son, Ky - ri -

son, Ky - ri - e - lei - son, Ky - ri - e - e -

lei - son, Ky - ri - e - e - lei - son, e - lei -

son, Ky - ri - e - lei - son, Ky - ri - e - e -

Ky - ri - e - lei - son, Ky - ri - e - lei -

Ky - ri - e - lei - son, Ky - ri - e - lei -

ri - e - e - lei - son, Ky - ri - e - e - lei -

Ky - ri - e - lei - son, Ky - ri - e - lei -

e - lei - son, Ky-ri-e - lei -  
 - lei - son, e - le - i - son, Ky - ri-e-lei -  
 - son, Ky - ri-e-lei -  
 lei - son, Ky - ri-e-lei -

son, Ky - ri-e e - lei -  
 son, Ky-ri - e e - lei-son, Ky -  
 son, Ky - ri-e-lei -  
 son, Ky - ri-e-lei -

8 8 8 8

- son, Ky - ri - e e - lei - son.  
 - son, Ky - ri - e e - lei - son.  
 - son, Ky - ri - e e - lei - son.  
 son, Ky - ri - e e - lei - son.

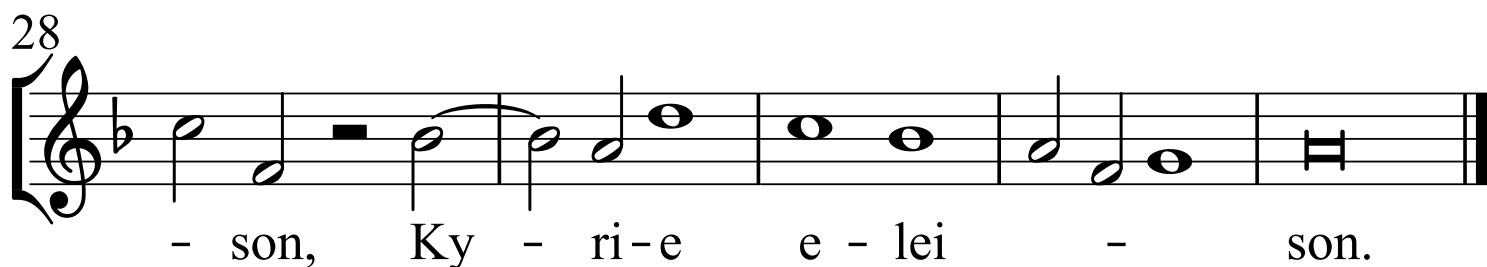
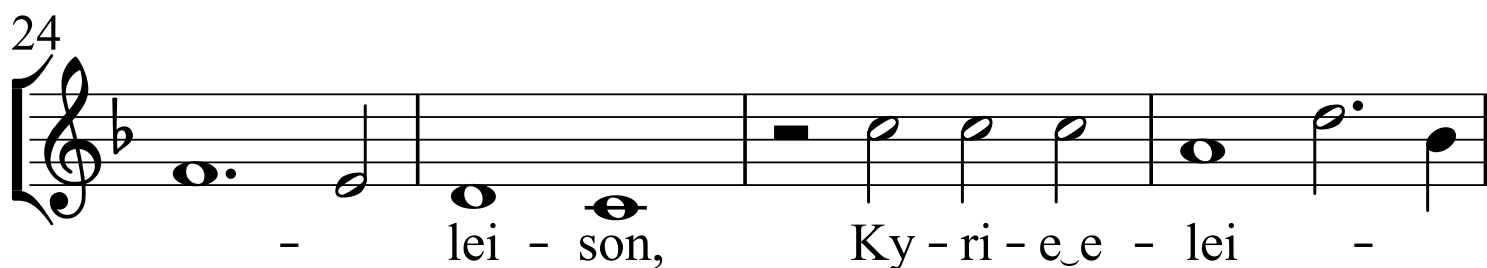
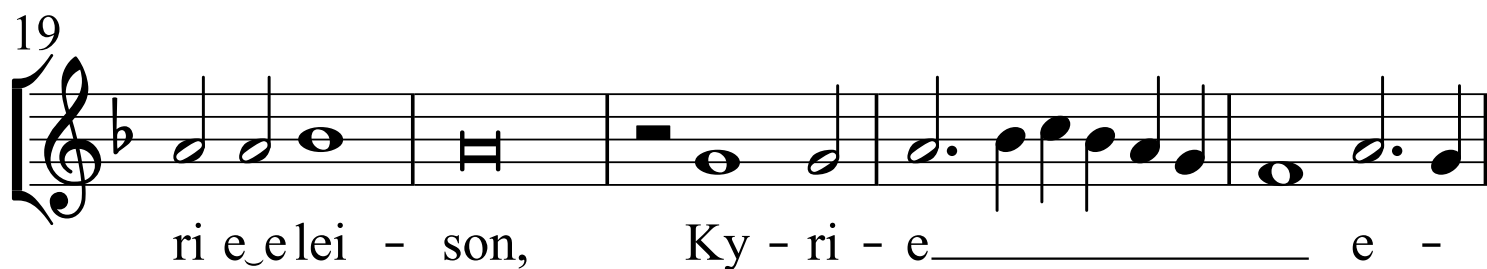
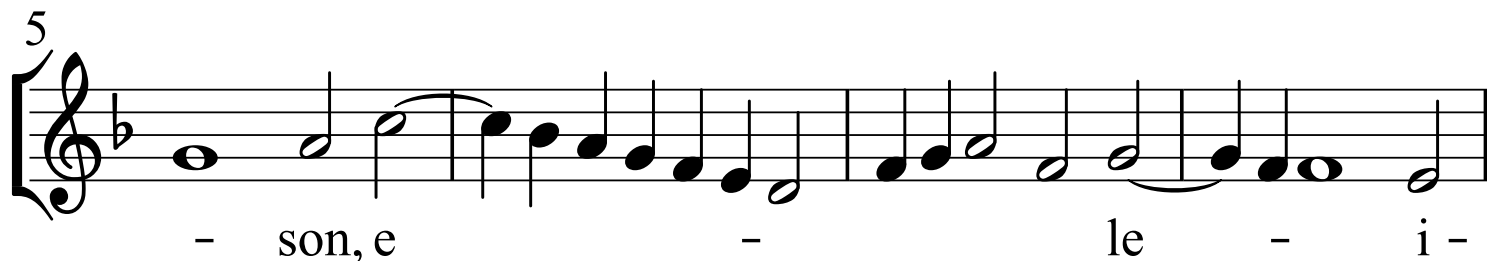
- son, Ky - ri - e e - lei - son.  
 - son, Ky - ri - e e - lei - son.  
 - son, Ky - ri - e e - lei - son.  
 son, Ky - ri - e e - lei - son.

8 8 8 8

# Canto I

Giovanni Pierluigi da Palestrina  
(1525 - 1594)

## Missa Laudate Dominum - Kyrie I à8



## Alto I

Giovanni Pierluigi da Palestrina

(1525 - 1594)

## Missa Laudate Dominum - Kyrie I à 8

8 Ky - ri-e-e-le - - -

5 8 - i-son, Ky-ri-e-e-le - i-son, Ky -

9 8 ri - e e - le - i - son, \_\_\_\_\_

13 2 8 Ky - ri-e-e-lei - son, Ky -

19 8 ri-e-e-lei - son, Ky - ri - e e - lei -

23 8 son, \_\_\_\_\_ e - le - i - son, \_\_\_\_\_

26 8 \_\_\_\_\_ Ky - ri-e-e-lei - son, Ky - ri-e-e-lei -

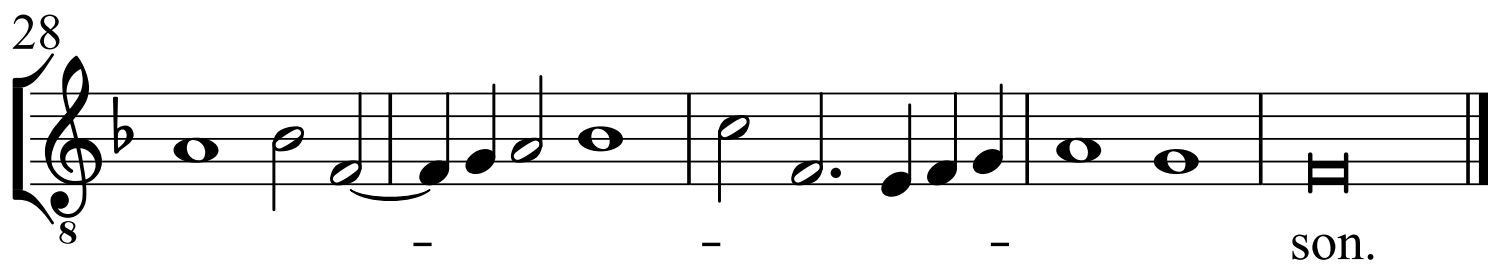
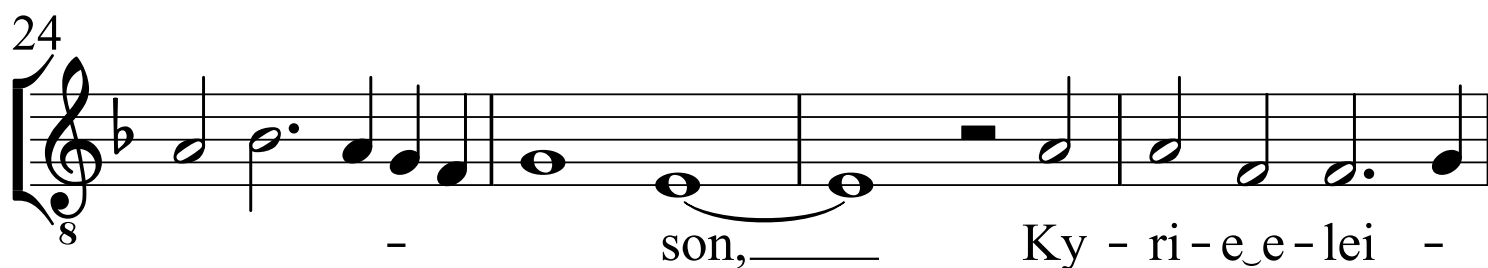
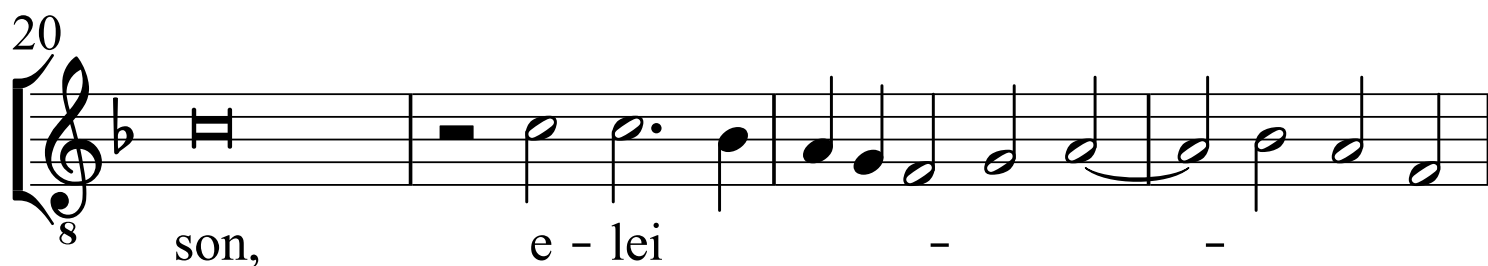
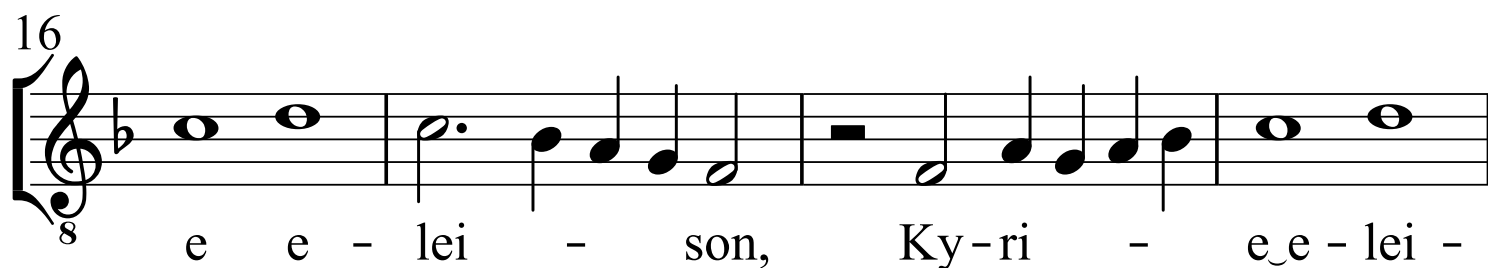
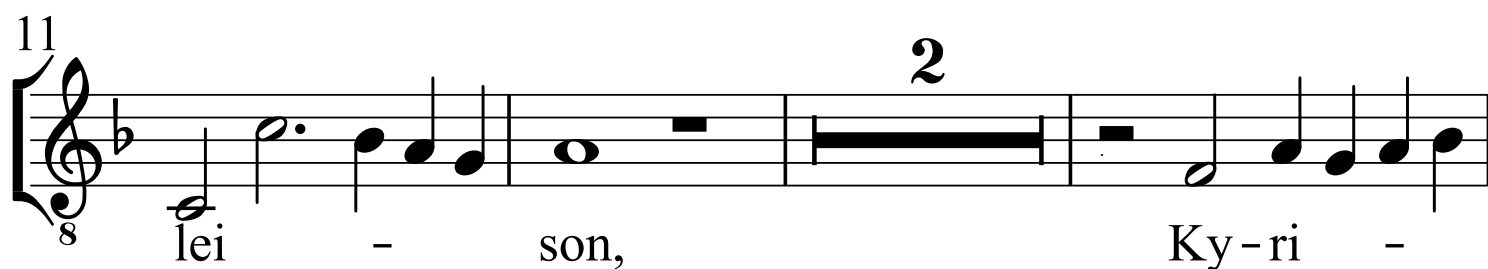
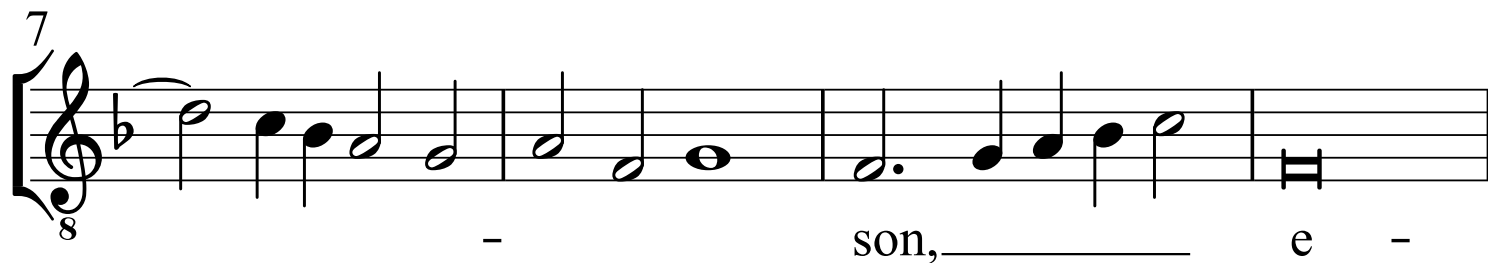
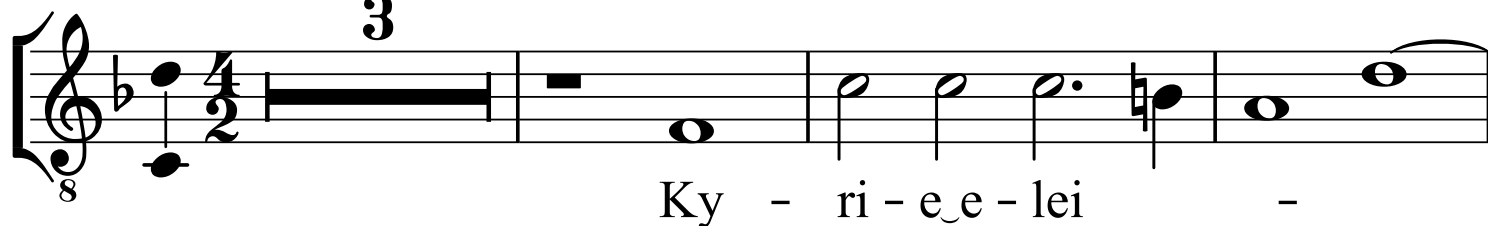
30 8 - son, Ky - ri - e-e-le - i - son.

**Tenor I**

Giovanni Pierluigi da Palestrina  
(1525 - 1594)

**Missa Laudate Dominum - Kyrie I à8**

**3**



**Basso I**Giovanni Pierluigi da Palestrina  
(1525 - 1594)**Missa Laudate Dominum - Kyrie I à 8**

4

Ky - ri-e\_e - lei -

8

- son, Ky - ri-e\_e - le - i - son, —

13

2

Ky - ri-e\_e-lei - son, Ky -

19

ri - e\_e-lei - son, Ky - ri - e\_e - lei -

23

- - son, — Ky -

27

ri - e\_e - lei - son, Ky - ri - e\_e - lei -

30

son, Ky - ri - e\_e - lei - son.

## Missa Laudate Dominum - Kyrie I à 8

9

Ky - ri-e\_e-le - i - son, Ky -

13

- ri - e e-lei - son,

17

Ky-ri-e\_e - lei - son, — Ky-ri-e\_e -

21

lei - son, Ky - ri-e e -

27

- lei - son, Ky -

30

- ri - e\_e - lei - son.



## Missa Laudate Dominum - Kyrie I à 8

8

Ky - ri - e e - le -

11

- i - son, Ky - ri - e e - le -

14

- i - son, Ky - ri - e e - lei - son, -

19

2

8

Ky - ri - e e - lei - son,

25

8

Ky - ri - e e - lei - son, Ky -

28

8

ri - e e - lei - son, Ky - ri - e e - lei -

31

8

- son.

# Tenor II

Giovanni Pierluigi da Palestrina  
(1525 - 1594)

## Missa Laudate Dominum - Kyrie I à 8

7

8 Ky-rie e - le -

11

8 - i - son, Ky-ri - e e - lei - son,

16

8 Ky - ri - e e - lei - i -

19

8 son, Ky - ri - e e - lei - son,

23

2

8 Ky - ri-e e-lei -

29


8 son, Ky - ri-e e - lei - son.

# Basso II

Giovanni Pierluigi da Palestrina  
(1525 - 1594)

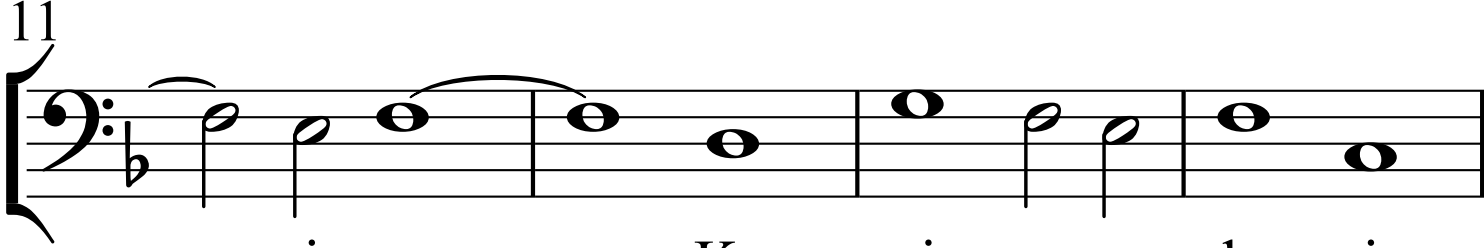
## Missa Laudate Dominum - Kyrie I à8

7




Ky - ri-e\_e-le -

11



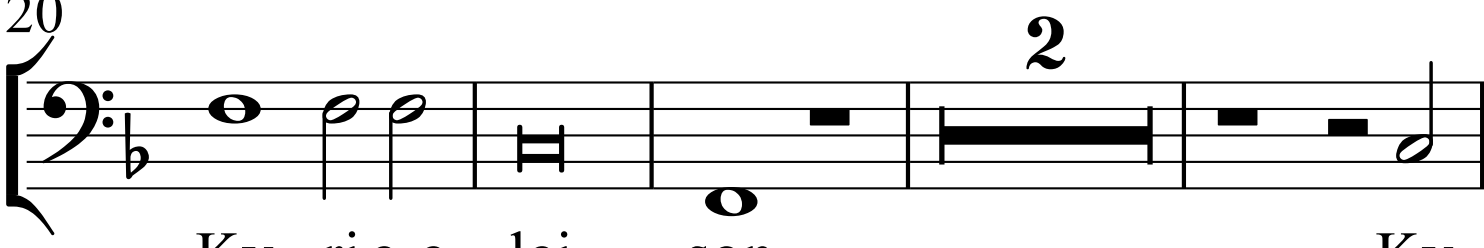
- i - son, Ky - ri - e e - le - i -

15



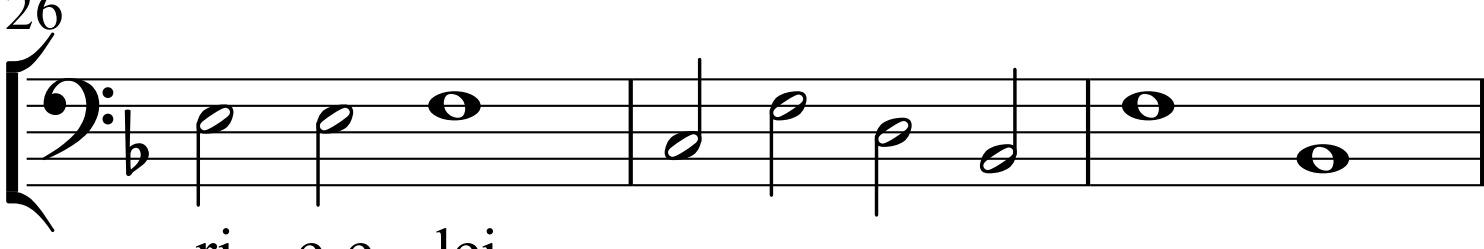
son, Ky - ri-e\_e - lei - son,

20



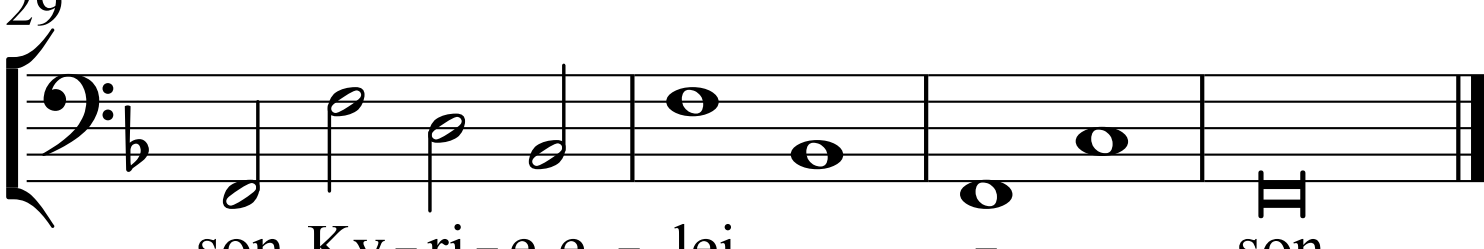
Ky - ri e\_e - lei - son, Ky-

26



ri - e\_e - lei - -

29



son, Ky - ri - e\_e - lei - son.